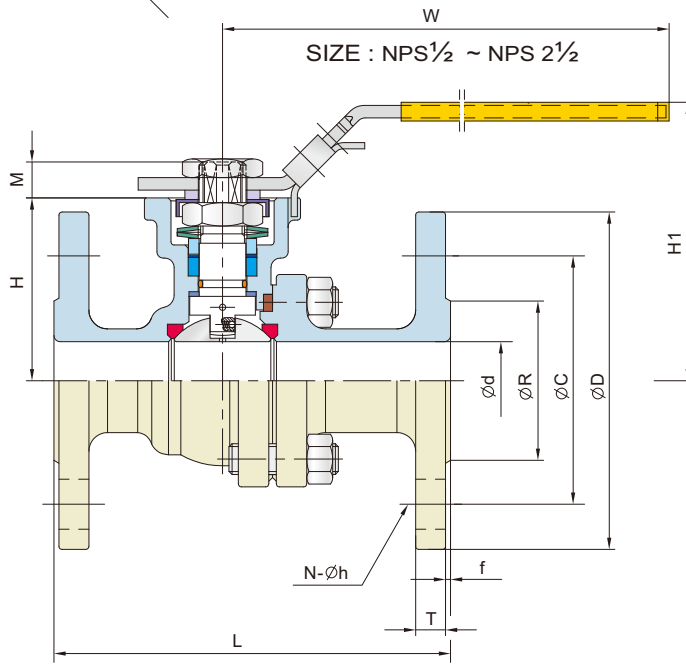
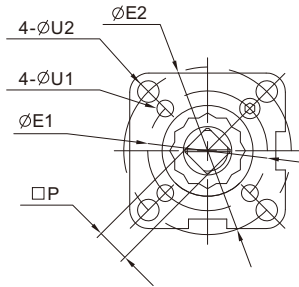
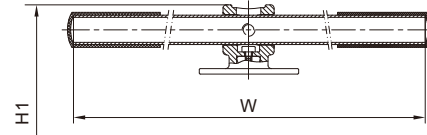


Direct Mount Pad (ISO 5211)



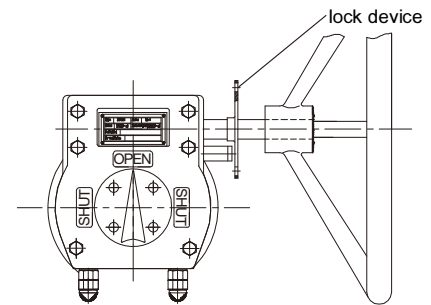
Pipe Handle Operation

SIZE : NPS 3 ~ NPS 8



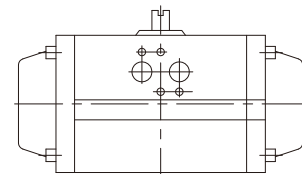
Gear Operation (Optional)

SIZE : NPS 2 1/2 ~ NPS 8



Automation (Optional)

SIZE : NPS 1/2 ~ NPS 8



DIMENSION TABLE

ASME Class 150 DIMENSION TABLE KV-L41/KV-L61

Unit : mm

NPS	d	L	R	D	C	T	f	N	h	H	H1	W	P	M	E1	E2	U1	U2	ISO 5211
1/2	15	108	35.0	90	60.3	8.0	2	4	16.0	49	79	147	9	9	36	42	6	6	F03~F04
3/4	20	117	43.0	100	69.9	8.9	2	4	16.0	53	84	147	9	9	36	50	6	7	F03~F05
1	25	127	51.0	110	79.4	9.6	2	4	16.0	59	90	177	11	11	42	50	6	7	F04~F05
1 1/4	32	140	63.5	115	88.9	11.2	2	4	16.0	71	102	177	11	11	42	70	6	9	F04~F07
1 1/2	38	165	73.2	125	98.4	12.7	2	4	16.0	76	110	197	14	14	50	70	7	9	F05~F07
2	50	178	92.0	150	120.7	14.3	2	4	19.0	82	115	197	14	14	50	70	7	9	F05~F07
2 1/2	63.5	190	104.7	180	139.7	15.9	2	4	19.0	102	150	267	17	17	70	102	9	11	F07~F10
3	76	203	127.0	190	152.4	17.5	2	4	19.0	112	176	300	17	17	70	102	9	11	F07~F10
4	100	229	157.0	230	190.5	22.3	2	8	19.0	140	211	400	22	22	—	102	—	11	F10
5	125	356	186.0	255	215.9	22.3	2	8	22.3	183	263	600	27	27	125	—	14	—	F12
6	150	394	216.0	280	241.3	23.9	2	8	22.3	204	284	800	27	27	125	—	14	—	F12
8	200	457	270.0	345	298.5	27.0	2	8	22.3	253	334	800	27	27	125	140 ^(a)	14	18 ^(a)	F12orF14 ^(a)

ASME Class 150 DIMENSION TABLE KV-L41/KV-L61

Unit : inch

NPS	d	L	R	D	C	T	f	N	h	H	H1	W	P	M	E1	E2	U1	U2	ISO 5211
1/2	0.59	4.25	1.38	3.50	2.38	0.31	0.06	4	5/8	1.93	3.11	5.79	0.354	0.30	1.42	1.65	0.24	0.24	F03~F04
3/4	0.79	4.62	1.69	3.88	2.75	0.34	0.06	4	5/8	2.09	3.31	5.79	0.354	0.35	1.42	1.97	0.24	0.28	F03~F05
1	0.98	5.00	2.01	4.25	3.12	0.38	0.06	4	5/8	2.32	3.54	6.97	0.433	0.43	1.65	1.97	0.24	0.28	F04~F05
1 1/4	1.26	5.50	2.50	4.62	3.50	0.44	0.06	4	5/8	2.80	4.02	6.97	0.433	0.43	1.65	2.76	0.24	0.35	F04~F07
1 1/2	1.50	6.50	2.88	5.00	3.88	0.50	0.06	4	5/8	2.99	4.33	7.76	0.551	0.55	1.97	2.76	0.28	0.35	F05~F07
2	1.97	7.00	3.62	6.00	4.75	0.56	0.06	4	3/4	3.23	4.53	7.76	0.551	0.55	1.97	2.76	0.28	0.35	F05~F07
2 1/2	2.50	7.50	4.12	7.00	5.50	0.62	0.06	4	3/4	4.02	5.91	10.5	0.669	0.67	2.76	4.02	0.35	0.43	F07~F10
3	2.99	8.00	5.00	7.50	6.00	0.69	0.06	4	3/4	4.41	6.93	11.9	0.669	0.67	2.76	4.02	0.35	0.43	F07~F10
4	3.94	9.00	6.19	9.00	7.50	0.88	0.06	8	3/4	5.51	8.31	15.9	0.866	0.87	—	4.02	—	0.43	F10
5	4.92	14.00	7.32	10.00	8.50	0.88	0.06	8	7/8	7.20	10.35	23.7	1.063	1.06	4.92	—	0.55	—	F12
6	5.91	15.50	8.50	11.00	9.50	0.94	0.06	8	7/8	7.99	11.18	31.6	1.063	1.06	4.92	—	0.55	—	F12
8	7.87	18.00	10.63	13.50	11.75	1.06	0.06	8	7/8	9.96	13.15	31.6	1.063	1.06	4.92	5.51 ^(a)	0.55	0.71 ^(a)	F12orF14 ^(a)

(a):Optional